



CANTON COMPREHENSIVE PLAN

CANTON COMPREHENSIVE PLAN

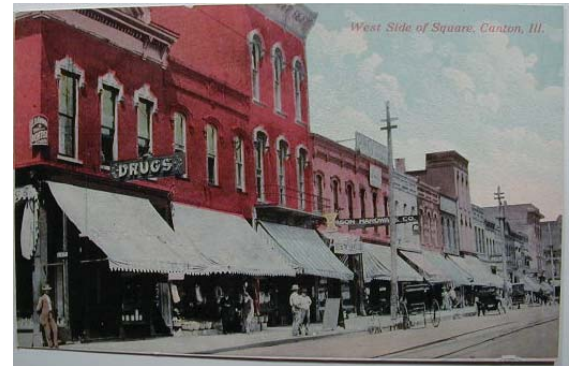
Located in western Illinois along the Spoon River Valley, the City of Canton is a semi rural, blue collar community that prides itself on its strong school, parks, and health-care systems and maintains its small town charm. Though located about 30 miles south of the greater Peoria metropolitan area, Canton anticipates its own opportunities for growth and development. While recent development has been fairly limited with the new ethanol plant being one of the most prominent developments, the City envisions opportunities in all facets of the community, including residential, commercial, industrial, and recreation.

With Teska's planning assistance and leadership, the City set forth with preparation of the 2007 Comprehensive Plan, which establishes a community vision, community policies, and a growth management plan to prepare Canton for future growth and development, particularly relating to land use, transportation, community facilities and public infrastructure, housing, and economic development. In addition to City wide policies and planning recommendations, urban design concepts were developed to help enhance the physical image and experience of visiting Downtown Canton. An implementation plan was also established to ensure the City is provided with proactive steps to carry out the Comprehensive Plan recommendations.



Facade enhancement rendering of existing JC Penney building.

CANTON, IL



Downtown Canton, early 1900's

