



CITY OF EVANSTON MAPLE AVENUE STREETScape AND CHURCH STREET PLAZA EVANSTON, IL

MASTER STREETScape PLAN AND DESIGN GUIDELINES

Evanston's theater district is enjoying new purpose as a street devoted to people thanks to an expanded streetscape designed by Teska.

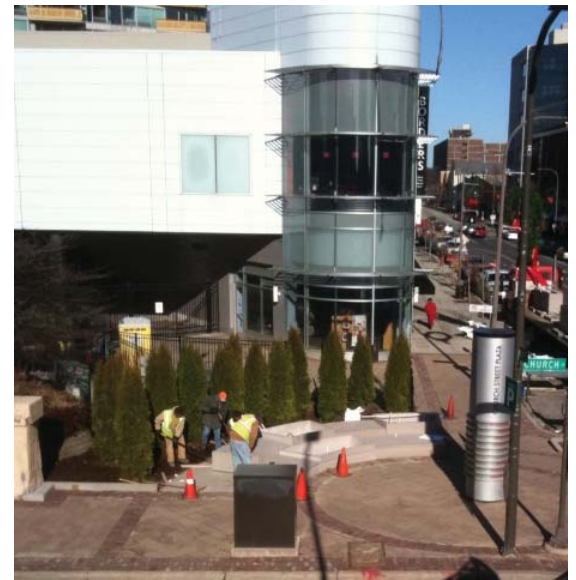
Teska worked with the City of Evanston and Gewalt Hamilton Engineers to design and oversee the reconstruction of the Maple Avenue roadway and streetscape between Clark and Church Streets. The purpose of the streetscape reconstruction was to narrow the roadway and widen the sidewalks to accommodate heavy pedestrian traffic associated with the movie theater, parking garage and nearby retail shops. In addition, the existing corner plaza at the southwest corner of Maple Ave and Davis Street was in need of reconfiguration to promote a welcoming outdoor people place to the theater district.

Teska and the City of Evanston reached out to the Maple Avenue merchants, property owners and Optima Views homeowners association to solicit input on the streetscape design and to coordinate construction activities with the upcoming holiday shopping season.

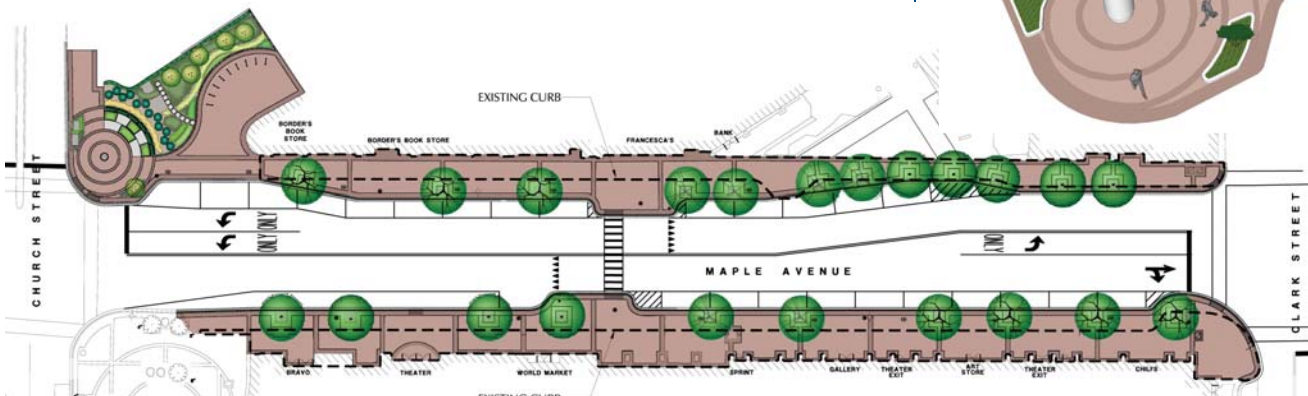
As planned, streetscape construction was completed in time for holiday shopping.

Features of the streetscape include the following:

- *Narrowed roadway travel lanes, replaced curb, gutter and milled & resurfaced the street
- *Relocated underground utilities, sewer and water, fire hydrants and street lighting
- *Reconfigured on-street parking and loading areas
- *Widened sidewalks
- *Created a new Mid block pedestrian crossing
- *New outdoor plaza amphitheatre seating, landscape and planters at the southwest corner of Maple Ave and Davis Street
- *Decorative paving
- *Parkway plantings
- *Seasonal planters
- *Bike racks
- *Reused the existing precast paver bricks and iron tree grates.
- *Provided innovative footings and sub-surface detailing to avoid disruption of major fiber optic communication trunk lines within the plaza area.
- *Provided for ADA compliant slope grading



Above: Built Streetscape Enhancements



Above: Proposed Streetscape Enhancement

