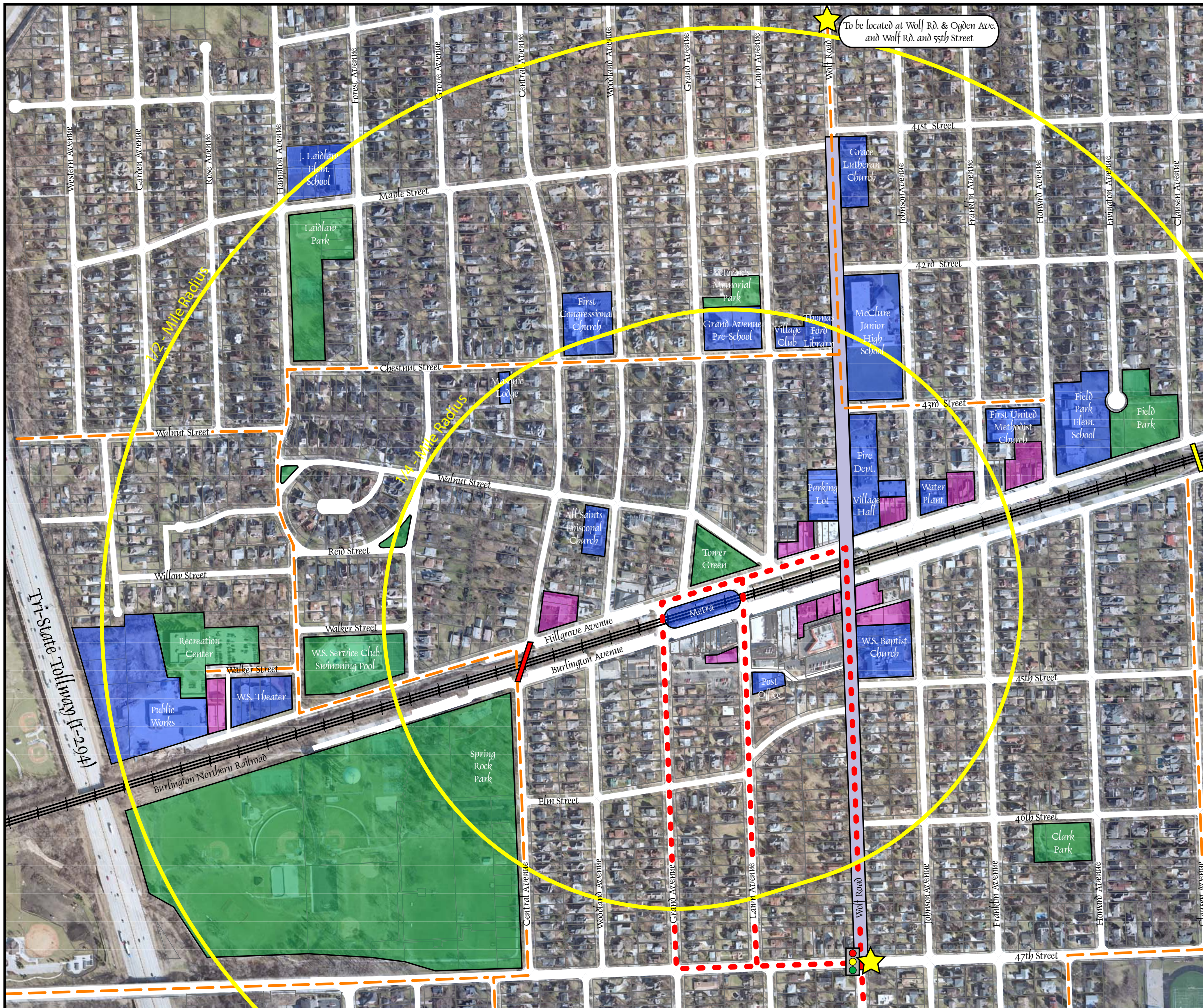




# Village of Western Springs PLANNING ISSUES MAP



To be located at Wolf Rd. & Ogden Ave.  
and Wolf Rd. and 55th Street

- LEGEND** **DRAFT**
- DOWNTOWN GATEWAY CORRIDOR
  - OPPORTUNITY SITE
  - INSTITUTIONAL
  - PARK / OPEN SPACE
  - 1/4 AND 1/2 MILE RADIUS FROM STATION
  - PROPOSED BIKE ROUTE (ON-STREET)
  - PEDESTRIAN/BIKE UNDERPASS
  - PROPOSED PEDESTRIAN/BIKE UNDERPASS (location to be determined)
  - POTENTIAL DIRECTIONAL SIGN



DRAFT - JANUARY 8, 2010

0 225 450  
  
 Scale in Feet

N