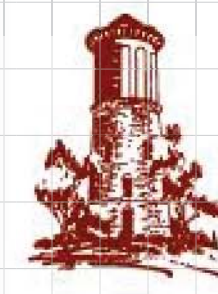
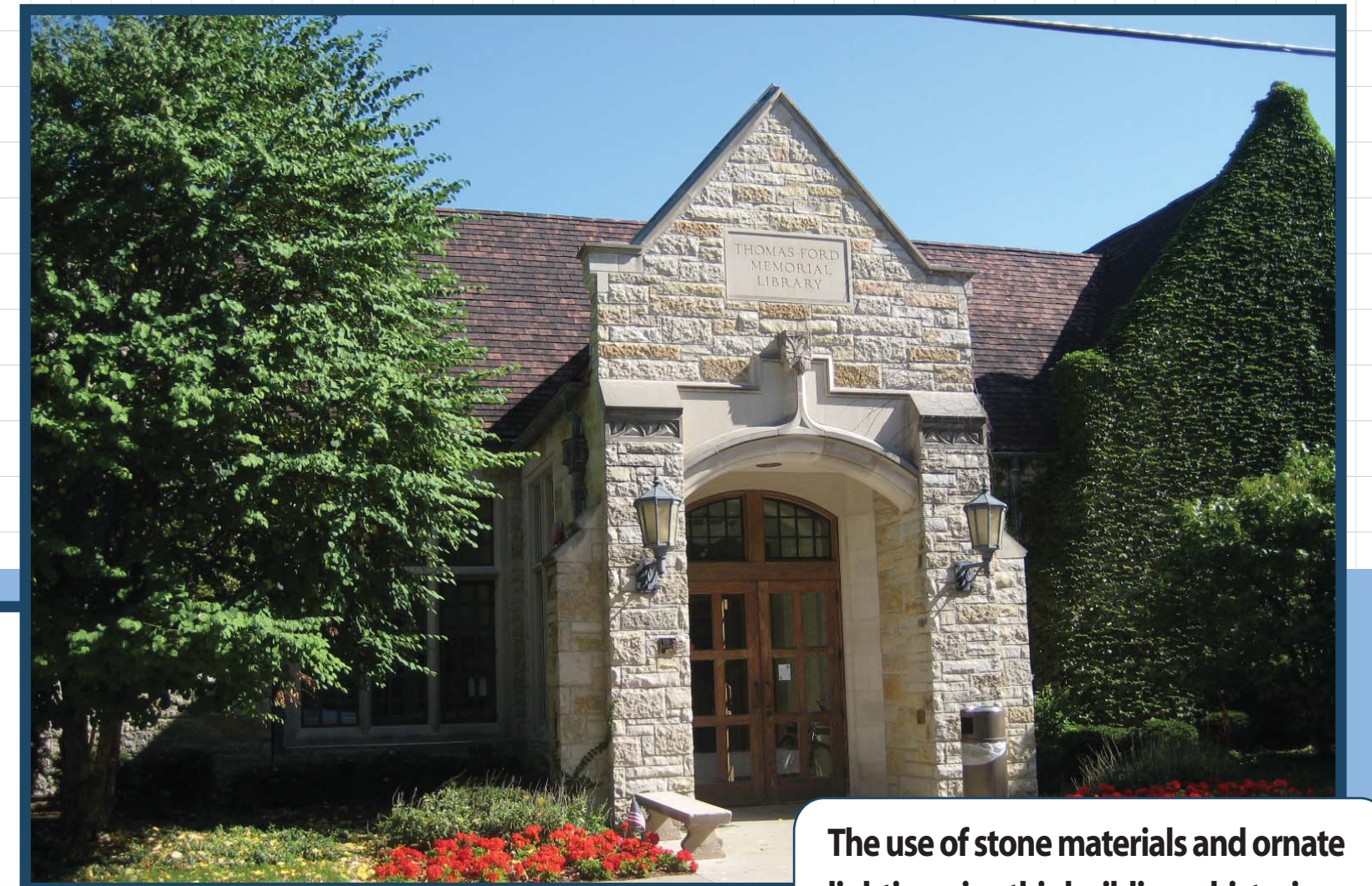


ARCHITECTURE

One of the concerns expressed in early planning discussions is the lack of architectural character for some of the newer buildings in downtown. Architectural guidelines will be an important part of this downtown plan to provide the development community with a clear understanding of what the community desires in new construction. This board highlights some of the issues that will be addressed, along with good and bad examples from Western Springs and neighboring communities. What architectural features are important to you?



VILLAGE of WESTERN SPRINGS
COOK COUNTY, ILLINOIS



The use of stone materials and ornate lighting give this building a historic quality. Also note the recessed entryway and front-facing roofline.

Consider....

materials

roof pitch

signage

building form

lighting



This three story, mixed use building integrates a variety of architectural features to add visual interest including horizontal concrete banding, arched windows, a recessed central entrance, an inset patio area with surrounding fence, gooseneck lighting, and awnings.



Ornate, gooseneck lighting on the facade casts light onto window awnings and unique signage below.



Large transparent windows for a storefront makes this an inviting place for pedestrians to walk by and look into. Note: Maroon awning and inset entrance.



Defined entrance and use of metal materials at corner helps to diversify building materials while adding visual interest. Note: Arched metal awnings above windows on first floor.



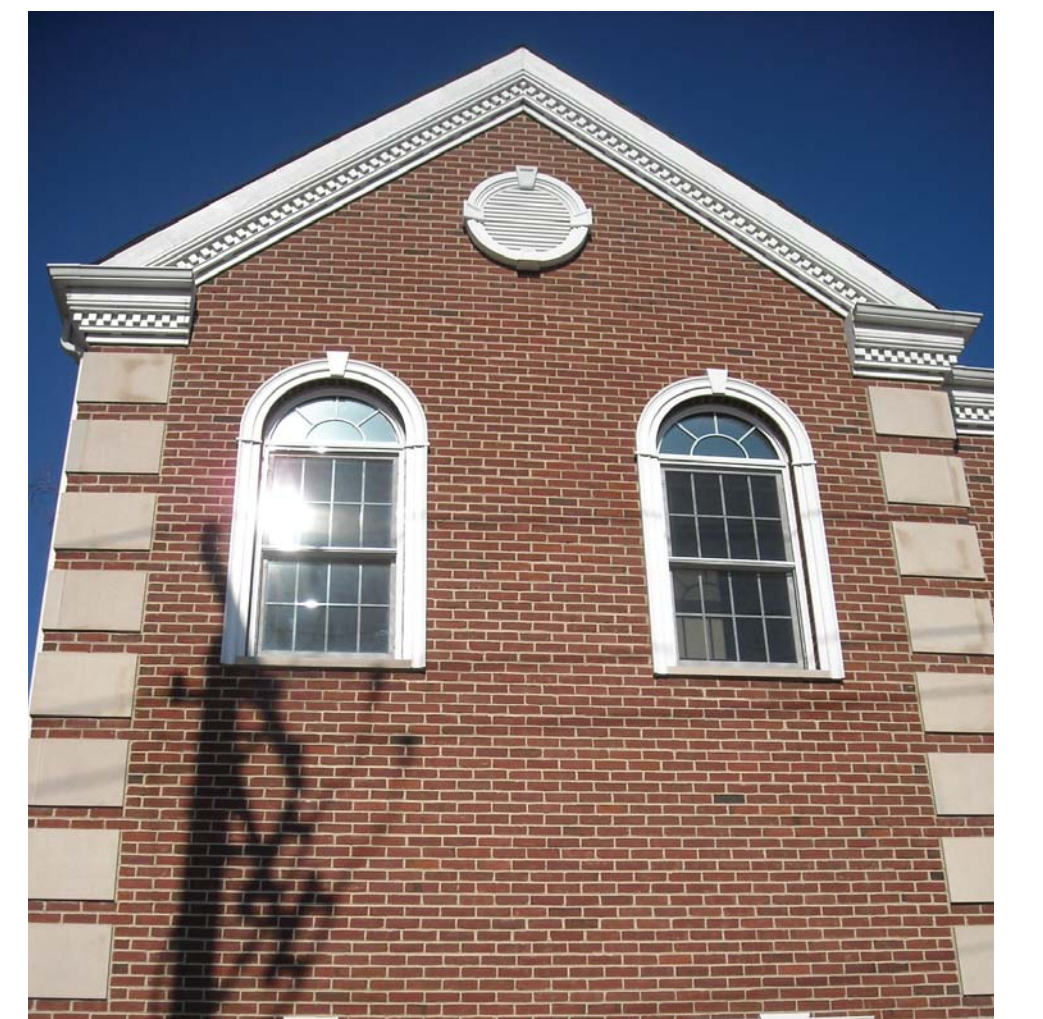
Kirschbaum's Bakery has a tudor style facade on the second story with exposed wood beams and a side sloping roof.



Arched fenestrations with intricate window paneling adds distinction to this two story brick building.



This signage utilizes bronzed-cast letters on a green background, paired with a striped green and white awning.



Cement block detailing on the building's corners add visual interest while the roof line maintains nicely defined eaves.

