

MAP IT - FOCUS AREAS/LAND USE

Western Expansion



Determine future development that will bring investment and further enhance Carpentersville's tax base.

Randall Road



Plan for vacant land and buildings while improving Carpentersville's identity & recognition along the corridor.

Route 31



Consider mixed-used development and enhancing the trail connection to the Fox River, including biking and walking.

Route 31 - Spring Hill Mall



Work with stakeholders and coordinate with West Dundee to plan for the future development of Spring Hill Mall.

Old Town



Enhance the connectivity, park space, attractions, and the surrounding area.

Route 25



Pursue strategic commercial and mixed-use development that will strengthen the corridor and attract visitors.

ISSUES & OPPORTUNITIES - LAND USE



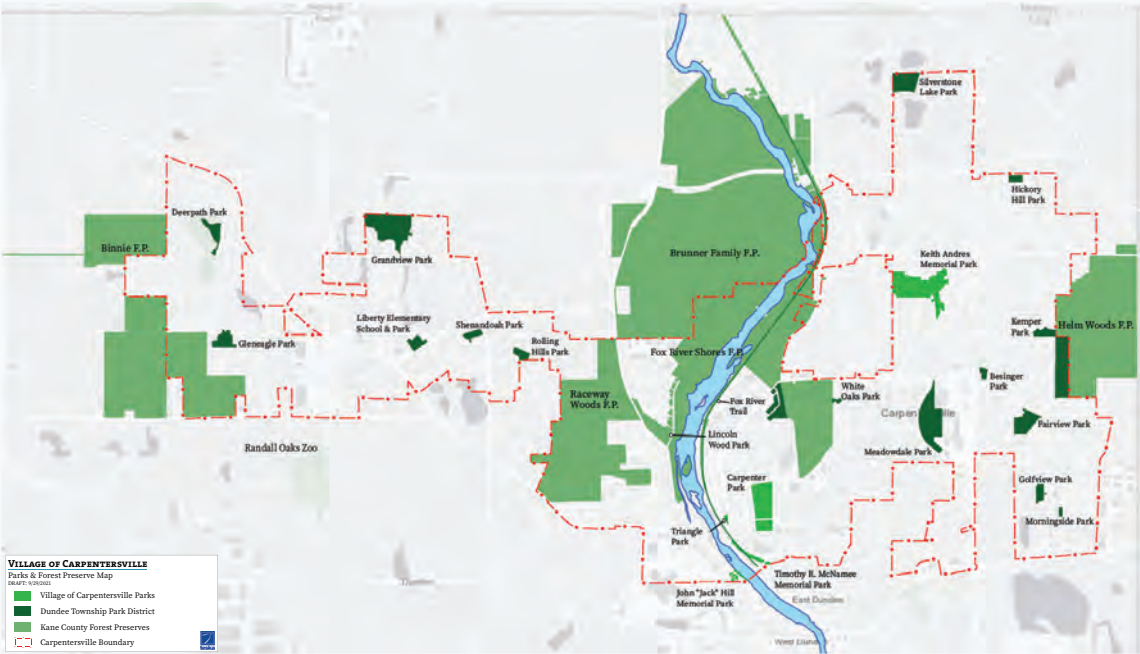
Carpenter Park



Fox River Trail



Raceway Woods Forest Preserve



What do you love about your favorite parks?

What types of recreational amenities are needed?

What programs or services would you like to see be implemented?

Housing



Preserve existing single family housing.

Retail



Increase local retail businesses to retain local spending & attract visitors.

Industry



Build on strengths of local companies.



Pursue high quality, modern multi-family housing.



Support businesses to create a more animated & lively environment.

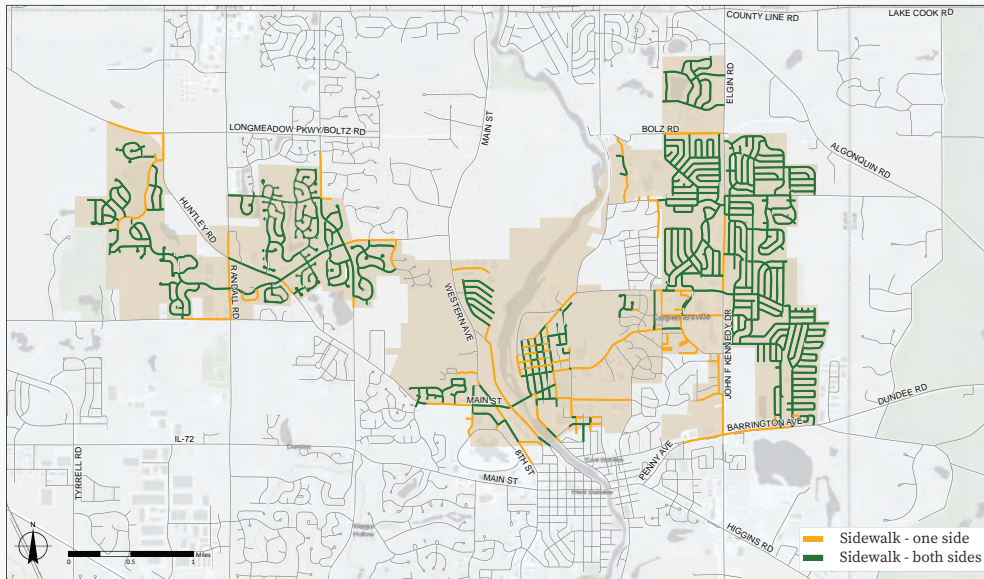


Attract and retain local talent and families.

**Tell us, what do
you want to see
built in Carpentersville?**

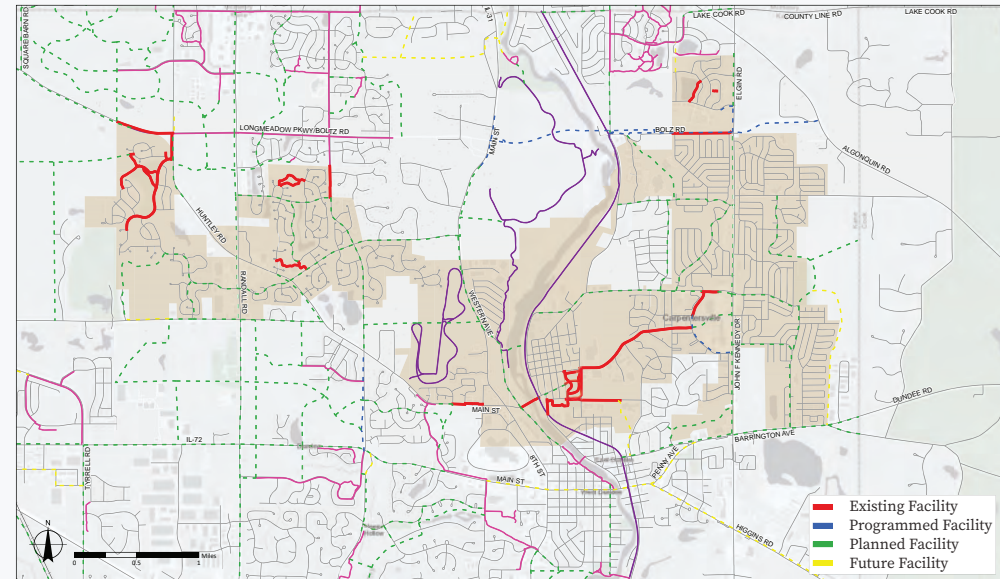
SHARE YOUR IDEAS - HOUSING, RETAIL, & INDUSTRY

Village of Carpentersville Sidewalk Map



Map displaying existing sidewalks throughout Carpentersville. Sidewalks on both sides of the road are greater in some areas compared to sidewalks on one side of the street.

Village of Carpentersville Trail Map



Map showing existing bike facilities within the Village. This also includes programmed facilities (in progress), planned (to be completed) and future (potential).



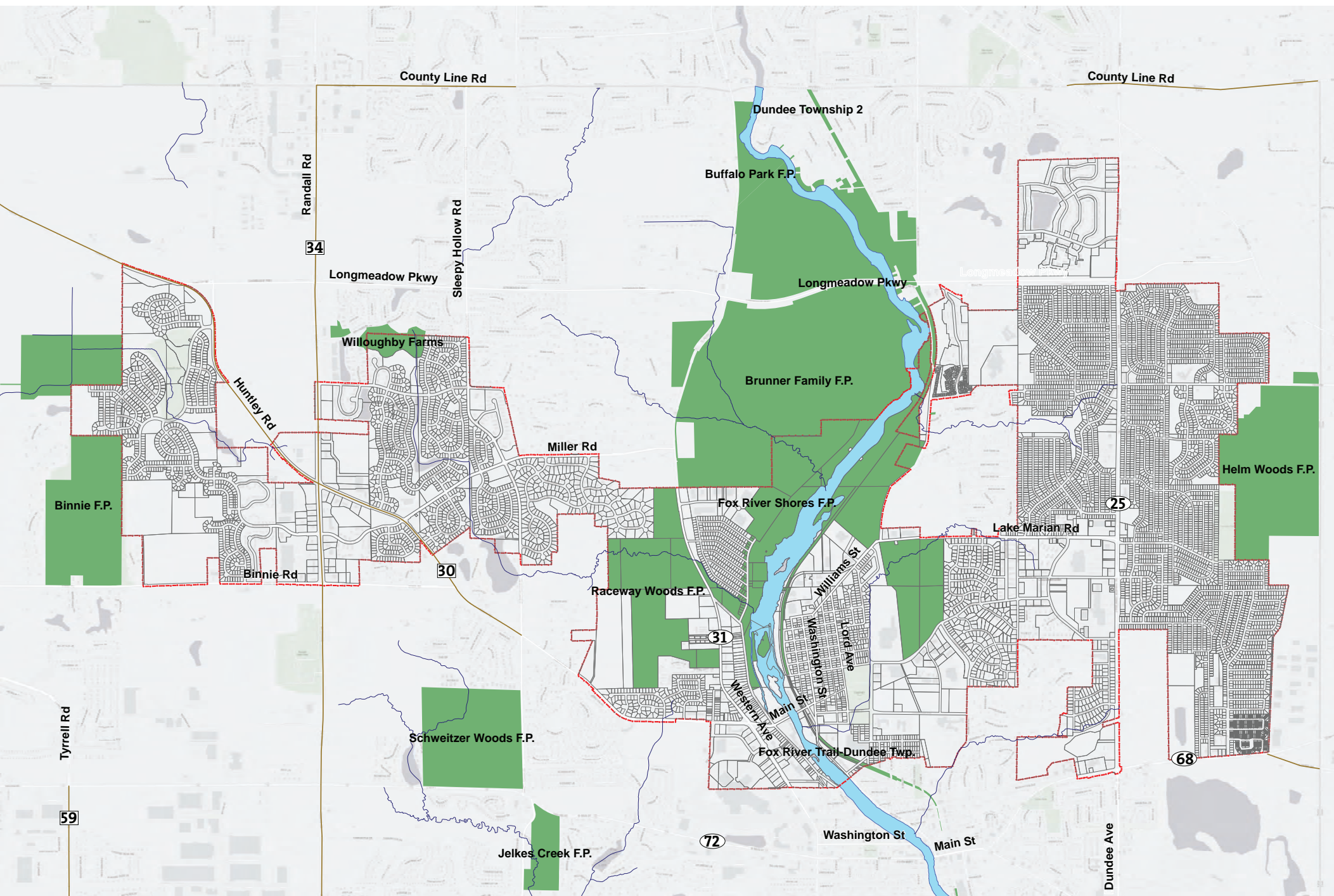
Strengthen connectivity along sidewalks, trails, and bike paths.



Improve safety along roadways for all users.



Improve water distribution network.



MAP IT - TRANSPORTATION & INFRASTRUCTURE